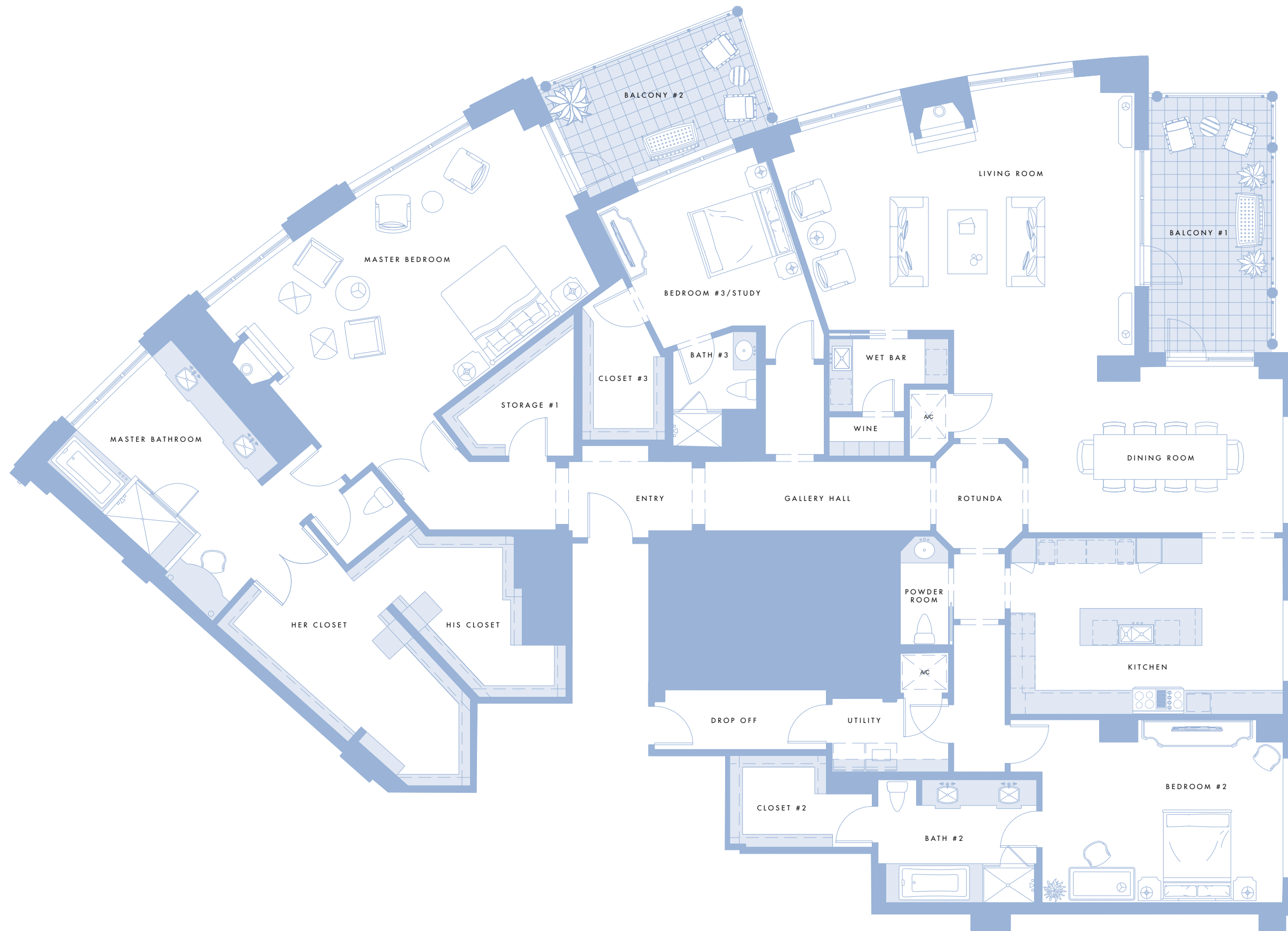


PLANS M&I, COMBINED



3 Bedrooms
3 Full, 1 Half Baths

APPROXIMATE SQUARE FOOTAGE

14th Floor	
Interior	3,887 sf
Exterior	550 sf
Total	4,437 sf

15th – 18th Floors

Interior	3,887 sf
Exterior	360 sf
Total	4,247 sf

APPROXIMATE ROOM DIMENSIONS

Entry	9'-8" x 5'-5"
Gallery Hall	17'-7" x 5'-5"
Rotunda	6'-9" x 8'-2"
Storage #1	8'-5" x 6'-8"
Kitchen	21'-3" x 13'-9"
Dining Room	19'-10" x 11'-10"
Living Room	26'-3" x 20'-7"
Utility Room	9'-0" x 5'-10"
Drop Off	13'-5" x 4'-8"
Powder Room	8'-5" x 3'-9"
Wet Bar	9'-3" x 5'-8"
Wine Room	5'-10" x 3'-0"

Master Bedroom	28'-0" x 17'-0"
Master Bathroom	17'-7" x 14'-2"
Master Closet	17'-8" x 13'-7"

Bedroom #2	18'-9" x 14'-4"
Bathroom #2	12'-5" x 9'-7"
Closet #2	11'-1" x 7'-2"

Bedroom #3/Study	13'-0" x 12'-6"
Bath #3	8'-8" x 6'-6"
Closet #3	12'-3" x 6'-6"

Balcony #1	19'-3" x 9'-7"
Balcony #2	16'-0" x 9'-1"

THESE DIAGRAMS, SQUARE FOOTAGE AND ROOM DIMENSIONS ARE FOR CONCEPTUAL PURPOSES ONLY AND ARE SUBJECT TO CHANGE.

The Residences At The Ritz-Carlton, Dallas are not owned, developed or sold by The Ritz-Carlton Hotel Company, L.L.C. Crescent Tower Residences, L.P. uses The Ritz-Carlton marks under license from The Ritz-Carlton Hotel Company, L.L.C.